



the **play inspection** company

Annual Inspection

Mudford Parish Council

Mudford Play Ground

Mudford , Yeovil, BA21 5TE



API Associate



Unit 5, Glenmore Business Park, Blackhill Road, Poole, Dorset, BH16 6NL
t- 01202 590675 e- info@playinspections.co.uk

[www. playinspections .co.uk](http://www.playinspections.co.uk)

Inspection Scope for RPII Inspection Methodology

This document outlines the RPII scope for inspections undertaken by the Inspectors listed as Annual Inspectors on the RPII Register of Inspectors when undertaking Indoor Annual, Outdoor Annual, Outdoor Operational and Outdoor Routine inspections.

Inspections are undertaken with reference to the standards listed in this preamble only; where no date for the standard is given it will be the standard that is current at the time of inspection except where overlap periods are granted by the standards committee when standards are updated. The information contained in reports is provided to assist the owner/operator in fulfilling their responsibilities as detailed in the relevant standard. Other standards referenced within the listed standards do not form part of the inspection, unless they are also explicitly listed here.

The following standards are relevant to all installations of equipment that are publicly accessible to users; this includes public parks, pay and play parks, schools, nurseries, public houses, holiday parks, indoor play centres, farm parks etc. All equipment used or employed in publicly accessible areas should meet with the requirements of the relevant standards (listed below):

BS EN 1176 Parts 1, 2, 3, 4, 5, 6, 10 & 11 Playground equipment intended for permanent installation outdoors & indoors.

BS EN 1176 Part 7 - 'Guidance on Installation, Inspection, Maintenance and Operation' (this document gives guidance to the owners/operators of the facility on the installation, inspection, maintenance and operation of playground equipment, excluding ancillary items).

In the United Kingdom the National Foreword forms an important part to the understanding and implementation of the recommendations set out in this document. It clarifies the application of the document within the UK as best practice guidance, as the document has been used since its initial publication. Therefore, in the UK this standard (BS EN 1176 – Part 7) contains no requirements and needs to be read and implemented as guidance, with the use of the term 'shall' therefore becoming a recommendation, as in the term 'should'.

Domestic play equipment falls outside of the scope of BS EN 1176 and has its own standards (BS EN 71 series – Safety of Toys). Where domestic equipment can be identified this will be acknowledged in the report but any comments concerning compliance will follow the requirements and recommendations of BS EN 1176.

When water play items, including spray parks, are inspected any comments concerning compliance within the inspection will refer to BS EN 1176. We have not assessed these against the requirements of BS EN 17232 (Water play equipment and features).

Other equipment that is not clearly identified as unsupervised or domestic (natural play, self-build equipment etc.) will be assessed for compliance with the relevant standard listed below:

BS EN 15312 Free access multi-sports equipment
BS EN 14974 Skateparks
BS EN 16630 Permanently installed outdoor fitness equipment
BS EN 16899 Parkour equipment (plus RPII/API guidance notes)

Annual and Post Installation inspections will take into consideration compliance with these current standards, and defects related to wear and vandalism. Items not listed in the report have not been included in the inspection. The inspection will cover the playground equipment and the active area (that area which is obviously part of the playground), nominally up to three metres around, the fence line if closer, or other areas as agreed.

Operational inspections only take into consideration defects related to cleanliness, equipment ground clearances, ground surface finishes, exposed foundations, sharp edges, missing parts, excessive wear (of moving parts) structural integrity, wear and vandalism.

Routine visual inspections relate only to the most obvious defects such as broken or missing parts, litter, vandalism and issues created by severe weather conditions (the intention is to identify hazards created by storm damage).

All inspections are non-dismantling, non-destructive and do not include any structural, toxicology or impact assessments defined in the standard; however, the inspector will undertake a manual test for stability and if equipment fails under manual load, or any other hazard is identified as an unacceptable risk, the owner/operator will be notified as soon as practicably possible.

The inspector will access all reasonably accessible equipment and will assess all reasonably accessible parts above the standing surface. Where it is not possible to access parts of the equipment without employing an alternative means of access the report will record the action required by the owner/operator to ensure the continued safe use of the equipment.

Ancillary equipment will be assessed using the inspector's knowledge and experience of the standards named in this document. (Note: Ancillary items are not included in the specific equipment-type parts of the EN 1176 series; hence they are not assessed for compliance with EN 1176 series and are subject to a general safety assessment).

The owner/operator is responsible for the overall safety of the equipment and area.

The inspector will not undertake any of the following works unless specifically agreed in writing at the time of order:

Checking the depth and underlying structural integrity of any surface areas and/or carrying out any testing of the impact attenuating properties of any surfaces; the identification of any corrosion, rot or other deterioration in any apparatus or equipment other than by an external inspection; the inspection of any equipment (or part thereof) that is beneath the playing surface (loose-fill materials may be moved to expose foundations); tightening any bolts, hinges or other fixing devices on any apparatus or equipment; assessing or inspecting any electrical installations contained on any site and/or apparatus and/or equipment; assessing or inspecting any water supplies and/or water features and/or any associated computerised systems (including carrying out any programming); where planting or trees are mentioned in the report no assessments of toxicity, suitability or condition are undertaken – the owner/operator should have suitable inspections provided by a competent person.

The owner/operator should have a 'design risk assessment' provided by the manufacturer/designer of the area for the equipment and location in which the facility is installed.

The operator is responsible for managing risks of their provision and is required by law to carry out a 'suitable and sufficient assessment' of the risks associated with a site or activity. This inspection shall be considered as contributing to the operator's discharge of this responsibility.

The details contained within the report are a snapshot of the condition at the time of inspection only and subsequent events may affect the condition of the facility. Suggested remedial actions are based on the knowledge and experience of the inspector and/or that of the inspection company. The owner/operator should always seek the advice of the manufacturer or a competent person when undertaking repairs and/or modifications to equipment.

A full copy of the Play Inspection Company Ltd. Terms & Conditions is available on our website (www.playinspections.co.uk)

The operator is responsible for following the guidance of the relevant standards. The standards give guidance on the installation, inspection, maintenance and operation of the various types of facilities. The inspection guidance is listed in Table 1, with an indication of which parts will be included in an RPII Annual or Post-Installation Inspection. The relevant standards also contain additional parts which the operator should follow.

Inspection recommendations of relevant standards Refer to relevant standards for full text	Annual Main	RPII Annual/ Post Installation Inspection
6.1 d) Overall levels of safety of equipment (see note 1)	✓	✓ [1]
6.1 d) Overall levels of safety of foundations (see note 1)	✓	✓ [1]
6.1 d) Overall levels of safety of playing surfaces (see note 2)	✓	✓ [2]
6.1 d) Compliance with the relevant parts of the standard and or risk assessment (see note 3)	✓	✓ [3]
6.1 d) Effects of weather	✓	✓
6.1 d) Presence of rot, decay or corrosion (see note 1)	✓	✓ [1]
6.1 d) Assessment of repairs made or added or replaced components (see note 4)	✓	✓ [4]
6.1 d) Excavation or dismantling/additional measures	✓	✗
6.2.1 Assessment of glass reinforced plastics (see note 5)	✓	✓ [5]
6.2.1 Inspection of one post equipment (see note 1)	✓	✓ [1]
6.2.4 Undertaking the Operators inspection protocol	✓	✗

NB: The clause numbers in table 1 are taken from BS EN 1176 - Part 7:2020. The content is equally applicable to all other relevant standards listed herein. Playgrounds contain a range of equipment from different manufacturers and installed over a number of years; operators should implement any guidance provided by the manufacturer. Item specific detail is not readily available to RPII Playground Inspectors, whose report contributes to the operator's overall Annual Main Inspection as detailed in the relevant standards.

[1] A manual test only is undertaken for stability. Wear and instability are only detectable where readily apparent without dismantling or destruction and without the use of tools, excavation or specialist equipment. Rot and corrosion are tested or with a hammer and/or steel rod. Decay in timber may exist which can only be found with specialist equipment.

[2] Only the visible condition and dimensional compliance of surface extent is considered. Neither testing of impact attenuating properties nor measurement of the thickness of bound surfaces are undertaken on RPII annual inspections.

[3] The inspection assesses compliance where this can be tested on site using manual methods without dismantling, destruction and without the use of tools or specialist equipment.

[4] The operator should use manufacturer's recommended parts, or equivalent. We are unable to verify if such parts have been used, and any subsequent change in quality or performance.

[5] Visible glass fibres will be noted in reports. The operator is responsible for repairs or replacement.

Risk Assessment Matrix

			Scores in the report are multiplication factors of Likelihood x Severity					
			Severity>>					
Likelihood	Very High probability, if the situation is not addressed an accident is almost certain.	5	Very High	VL (5)	L (10)	M (15)	H (20)	VH (25)
	High probability an accident is probable without any added factor.	4	High	VL (4)	L (8)	M (12)	H (16)	H (20)
	Moderate probability an incident is foreseeable.	3	Moderate	VL (3)	L (6)	L (9)	M (12)	M (15)
	Some probability, requires a combination of factors to take place.	2	Low	VL (2)	VL (4)	L (6)	L (8)	L (10)
	No significant probability; lightning strike, freak accident.	1	Very Low	VL (1)	VL (2)	VL (3)	VL (4)	VL (5)
			Very Low	Low	Moderate	High	Very High	
			1	2	3	4	5	
			No injury likely e.g. damaged or soiled clothing, minor bruising, grazes	Minor injury, laceration or bruising requiring first aid only	Injury requiring medical intervention e.g. cuts requiring stitches	Serious injury including concussions or fracture of long bones	Severe injury involving a potential life changing injury or fatality	
			Severity>>					
<p>Note 1: The total risk scores included within our reports are a multiplication factor of the calculated Likelihood and Severity of each finding. Both Likelihood and Severity are given a number between 1 - 5 as shown on the matrix above and these two numbers are then multiplied together to give the total risk score that is shown against defects on the report. Total risk scores can be divided in both directions, i.e. a total risk score of 12 could be a Likelihood (3) x Severity (4) or Likelihood (4) x Severity (3).</p> <p>Note 2: When we inspect we only see a snapshot of the current condition of the equipment. It is the operators responsibility to ensure that there is a continuing level of maintenance to keep the equipment in good working order and the site fit for use.</p>								

Equipment has been assessed to the following standards where relevant:

- BS EN 1176 Parts 1-11 (Playground equipment and surfacing)
- BS EN 14974 (Facilities for users of roller sports equipment)
- BS EN 15312 (Free access multi-sports equipment)
- BS EN 16899 (Parkour Equipment)
- BS EN 16630 (Outdoor Fitness Equipment).

Mudford Play Ground

Inspection Ref: 2794575

Site Ref: 62069

Inspected: 15-August-2025 - 07:54 by Garrick O'Connor (RPII Annual Inspector)

Risk Assessment: 12 Moderate Risk

**Location:**

There are no specific notes for this site

Disabled Access:

Some accessible features; an area that presents difficulties to the majority of people with disabilities but in favourable circumstances and certainly in partnership can be accessed.

i 6 - Low Risk

Item: Site General
Manufacturer: Owner/Operator
Surface Type: N/A
Item Quantity: 1
Equipment Compliance: N/A
Surface Area Compliance: N/A

Total Findings: 4



Finding 1

Signage of the wheeled sports area should be provided as recommended in BS EN 14974; this will include, but not exclusively, the use of the area, a recommendation to wear protective equipment, emergency contact details etc - Provide signage as recommended by BS EN 14974 for wheeled sports areas

Finding 2

There is algae, silt or moss growth on the surface resulting in slippery conditions - Clean and treat appropriately

Finding 3

The graphics around the fitness equipment is breaking up - Remove the loose material and consider re painting the graphics

Finding 4

The bitumen surface is worn or damaged - Monitor for any further deterioration and repair as required

i 5 - Very Low Risk

Item: Sign
Manufacturer: Not Identified
Surface Type: N/A
Item Quantity: 1
Equipment Compliance: N/A
Surface Area Compliance: N/A

Total Findings: 1



Finding 1

BS EN 1176 Part 7 recommends that signage shall include the site name / address - Provide additional information

i 8 - Low Risk

Item: Gate - Self Closing
Manufacturer: I.A.E. Fencing
Surface Type: Grass
Item Quantity: 1
Equipment Compliance: N/A
Surface Area Compliance: N/A



Total Findings: 1

Finding 1

There is a shallow hole in the grass under the gate - Reinstate to provide a uniform surface

i 6 - Low Risk

Item: Gate - Combination
Manufacturer: I.A.E. Fencing
Surface Type: Grass
Item Quantity: 1
Equipment Compliance: N/A
Surface Area Compliance: N/A



Total Findings: 2

Finding 1

The gate has no drop bolt sleeves fitted and the drop bolt has damaged the surface - Provide drop bolt sleeves and reinstate the surrounding surface

Finding 2

There is no padlock on the maintenance gate - Provide a padlock to secure the gate

i 6 - Low Risk

Item: Fence - Bow Top
Manufacturer: Not Identified
Surface Type: Grass
Item Quantity: 1
Equipment Compliance: N/A
Surface Area Compliance: N/A



Total Findings: 1

Finding 1

The adjacent foliage is overhanging - Cut back and maintain

i 4 - Very Low Risk

Item: Bench
Manufacturer: Not Identified
Surface Type: Grass
Item Quantity: 1
Equipment Compliance: N/A
Surface Area Compliance: N/A



Total Findings: 1

Finding 1

This item is satisfactory - no work required -

i 8 - Low Risk

Item: Teenage Shelter
Manufacturer: Not Identified
Surface Type: Concrete
Item Quantity: 1
Equipment Compliance: N/A
Surface Area Compliance: N/A



Total Findings: 2

Finding 1

There are trip hazards at the edges of the surface - Remove trip hazard

Finding 2

The paintwork on this item has been damaged or worn exposing the metal underneath which is rusting / corroding - Treat affected areas and repaint

i 8 - Low Risk

Item: 1 Bay 2 Seat (Flat)
Manufacturer: Wicksteed Playgrounds
Surface Type: Grass Matrix Tiles
Item Quantity: 1
Equipment Compliance: No
Surface Area Compliance: Yes



Total Findings: 5

Finding 1

The seats are too close to each other as defined in BS EN 1176 Part 2; this is a low risk failure and no remedial action is required - Monitor - No action given the risk assessment

Finding 2

The chain openings are in excess of the 8.6mm as recommended by BS EN 1176 - Monitor - No action given the risk assessment

Finding 3

The chain links are worn excessively and require renewing - Replace worn chains

Finding 4

The connecting lugs are showing signs of wear - Monitor for any further deterioration and repair as required

Finding 5

There is some wear to the shackles. - Monitor for any further deterioration and replace when 40% worn

i 6 - Low Risk

Item: See Saw
Manufacturer: Wicksteed Playgrounds
Surface Type: Grass Matrix Tiles
Item Quantity: 1
Equipment Compliance: Yes
Surface Area Compliance: Yes



Total Findings: 1

Finding 1

The surface has subsided in some areas creating trip point - Reinstate surface

i 6 - Low Risk

Item: Activity Trail
Manufacturer: Wicksteed Playgrounds
Surface Type: Grass
Item Quantity: 1
Equipment Compliance: No
Surface Area Compliance: Yes



Total Findings: 2

Finding 1

The connecting links are in excess of 8.6mm and less than 12mm and fail the requirements of BS EN 1176 Part 1; clause 4.2.13, Chains - Monitor - No action given the risk assessment

Finding 2

The ropes/nets are worn/damaged in places - Monitor for any further deterioration and repair or replace as required

i 8 - Low Risk

Item: Multi Play (Junior)
Manufacturer: Wicksteed Playgrounds
Surface Type: Grass Matrix Tiles
Item Quantity: 1
Equipment Compliance: No
Surface Area Compliance: Yes



Total Findings: 4

Finding 1

The item fails to meet the requirements of BS EN 1176 Part 1 4.2.7.2 for head and neck entrapment in the rope - Monitor - No action given the risk assessment

Finding 2

The ropes/nets are worn/damaged in places - Monitor for any further deterioration and repair or replace as required

Finding 3

The paintwork on this item has been damaged or worn exposing the metal underneath which is rusting / corroding - Treat affected areas and repaint

Finding 4

Cable ties are present and there are sharp projecting ends - Remove

i 6 - Low Risk

Item: 1 Bay 2 Seat (Cradle)
Manufacturer: Wicksteed Playgrounds
Surface Type: Grass Matrix Tiles
Item Quantity: 1
Equipment Compliance: No
Surface Area Compliance: Yes



Total Findings: 3

Finding 1

The chain openings are in excess of the 8.6mm as recommended by BS EN 1176 - Monitor - No action given the risk assessment

Finding 2

There is some notable evidence of chain wear - Monitor for any further deterioration and replace when 40% worn

Finding 3

There is some wear to the shackles. - Monitor for any further deterioration and replace when 40% worn

! 12 - Moderate Risk

Item: Basketball Post
Manufacturer: Adidas
Surface Type: Bitmac
Item Quantity: 2
Equipment Compliance: Yes
Surface Area Compliance: N/A



Total Findings: 3

Finding 1

The backboard graphics card is damaged - Replace

Finding 2

There is a potential conflict between the users of the basketball post and the users of the fitness equipment - Monitor and take appropriate action if required

Finding 3

There is some evidence of fire damage to the item - Monitor for any further deterioration and repair as required

i 4 - Very Low Risk

Item: Sign
Manufacturer: Hags
Surface Type: Bitmac
Item Quantity: 1
Equipment Compliance: N/A
Surface Area Compliance: N/A



Total Findings: 1

Finding 1

There is some graffiti present - Remove the graffiti

i 4 - Very Low Risk

Item: Push Up Station
Manufacturer: Hags
Surface Type: Bitmac
Item Quantity: 1
Equipment Compliance: Yes
Surface Area Compliance: Yes



Total Findings: 1

Finding 1

This item is satisfactory - no work required -

i 8 - Low Risk

Item: Handle Boat
Manufacturer: Hags
Surface Type: Bitmac
Item Quantity: 1
Equipment Compliance: Yes
Surface Area Compliance: Yes



Total Findings: 1

Finding 1

This item is satisfactory - no work required -

i 8 - Low Risk

Item: Cycle
Manufacturer: Hags
Surface Type: Bitmac
Item Quantity: 1
Equipment Compliance: Yes
Surface Area Compliance: Yes



Total Findings: 1

Finding 1

This item is satisfactory - no work required -

i 8 - Low Risk

Item: Skier
Manufacturer: Hags
Surface Type: Bitmac
Item Quantity: 1
Equipment Compliance: Yes
Surface Area Compliance: Yes



Total Findings: 1

Finding 1

This item is satisfactory - no work required -

i 8 - Low Risk

Item: Double Fitness Station
Manufacturer: Hags
Surface Type: Bitmac
Item Quantity: 1
Equipment Compliance: Yes
Surface Area Compliance: Yes



Total Findings: 1

Finding 1

There is offensive graffiti present - Remove as soon as practicable

i 8 - Low Risk

Item: Health Walker
Manufacturer: Hags
Surface Type: Bitmac
Item Quantity: 1
Equipment Compliance: Yes
Surface Area Compliance: Yes



Total Findings: 1

Finding 1

This item is satisfactory - no work required -

i 8 - Low Risk

Item: Flat Bank
Manufacturer: Not Identified
Surface Type: Bitmac
Item Quantity: 1
Equipment Compliance: No
Surface Area Compliance: No

Total Findings: 2



Finding 1

The item has insufficient safety zone allowed as required by BS EN 14974 – 6.4. This should equal at least 2.0 metres on this item - Monitor - No action given the risk assessment

Finding 2

The height of the barrier is less than 1200mm in contravention of BS EN 14974 - 6.2.6. This height must be achieved all around the platform and at a maximum distance of 300mm from the front of the platform. - Monitor - no reasonably practicable action given the risk assessment

i 8 - Low Risk

Item: Grind Box
Manufacturer: Not Identified
Surface Type: Bitmac
Item Quantity: 1
Equipment Compliance: Yes
Surface Area Compliance: No

Total Findings: 1



Finding 1

The item has insufficient safety zone allowed as required by BS EN 14974 – 6.4. This should equal at least 2.0 metres on this item - Monitor - No action given the risk assessment

i 8 - Low Risk

Item: Fun Box
Manufacturer: Not Identified
Surface Type: Bitmac
Item Quantity: 1
Equipment Compliance: No
Surface Area Compliance: No



Total Findings: 2

Finding 1

The item has insufficient safety zone allowed as required by BS EN 14974 – 6.4. This should equal at least 2.0 metres on this item - Monitor - No action given the risk assessment

Finding 2

The surrounding surface protrudes more than 5mm above the kicker plate level, BS EN 14974 - 6.1.4 recommends a maximum of 5mm - Adjust height to ensure a maximum of 5mm change in level

i 8 - Low Risk

Item: Grind Rail
Manufacturer: Not Identified
Surface Type: Bitmac
Item Quantity: 1
Equipment Compliance: Yes
Surface Area Compliance: Yes



Total Findings: 1

Finding 1

The item has been damaged - Monitor for any further deterioration and replace as required

i 8 - Low Risk

Item: Quarter Pipe
Manufacturer: Not Identified
Surface Type: Bitmac
Item Quantity: 1
Equipment Compliance: No
Surface Area Compliance: Yes



Total Findings: 2

Finding 1

The height of the barrier is less than 1200mm in contravention of BS EN 14974 - 6.2.6. This height must be achieved all around the platform and at a maximum distance of 300mm from the front of the platform. - Monitor - no reasonably practicable action given the risk assessment

Finding 2

The surrounding surface protrudes more than 5mm above the kicker plate level, BS EN 14974 - 6.1.4 recommends a maximum of 5mm - Adjust height to ensure a maximum of 5mm change in level

i 6 - Low Risk

Item: Football Goal
Manufacturer: Not Identified
Surface Type: Grass
Item Quantity: 1
Equipment Compliance: N/A
Surface Area Compliance: N/A



Total Findings: 4

Finding 1

NB: We have undertaken a maintenance inspection only of the football goal(s); full load testing falls outside the scope of our inspection. - Implement load testing as required

Finding 2

The paintwork on this item has been damaged or worn exposing the metal underneath which is rusting / corroding - Treat affected areas and repaint

Finding 3

The surface has eroded in some areas and may be slippery in wet conditions - Reinstate the surface

Finding 4

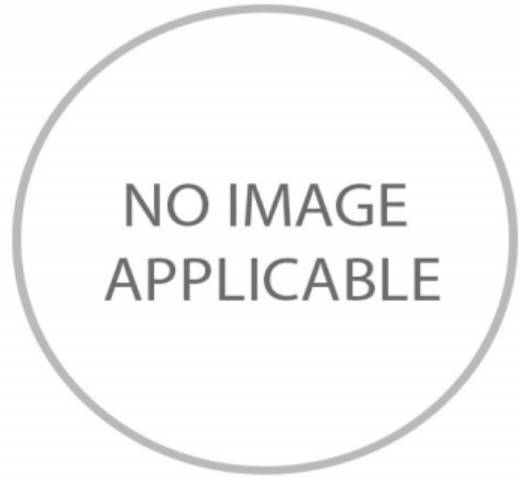
There is algae or moss on the surface of the equipment - Clean and treat appropriately

Findings information

i 5 - Very Low Risk (Finding 1)

Item: Ancillary Items - Site General
Manufacturer: Owner/Operator

Risk Level: V - Very Low Risk
Surface: N/A



Finding: Signage of the wheeled sports area should be provided as recommended in BS EN 14974; this will include, but not exclusively, the use of the area, a recommendation to wear protective equipment, emergency contact details etc

Action: Provide signage as recommended by BS EN 14974 for wheeled sports areas

i 6 - Low Risk (Finding 2)

Item: Ancillary Items - Site General
Manufacturer: Owner/Operator

Risk Level: L - Low Risk
Surface: N/A



Finding: There is algae, silt or moss growth on the surface resulting in slippery conditions

Action: Clean and treat appropriately

i 6 - Low Risk (Finding 3)

Item: Ancillary Items - Site General
Manufacturer: Owner/Operator

Risk Level: L - Low Risk
Surface: N/A



Finding: The graphics around the fitness equipment is breaking up

Action: Remove the loose material and consider re painting the graphics

i 6 - Low Risk (Finding 4)

Item: Ancillary Items - Site General
Manufacturer: Owner/Operator

Risk Level: L - Low Risk
Surface: N/A



Finding: The bitumen surface is worn or damaged

Action: Monitor for any further deterioration and repair as required

i 5 - Very Low Risk (Finding 1)

Item: Ancillary Items - Sign
Manufacturer: Not Identified

Risk Level: V - Very Low Risk
Surface: N/A



Finding: BS EN 1176 Part 7 recommends that signage shall include the site name / address
Action: Provide additional information

i 8 - Low Risk (Finding 1)

Item: Gates - Gate - Self Closing
Manufacturer: I.A.E. Fencing

Risk Level: L - Low Risk
Surface: Grass

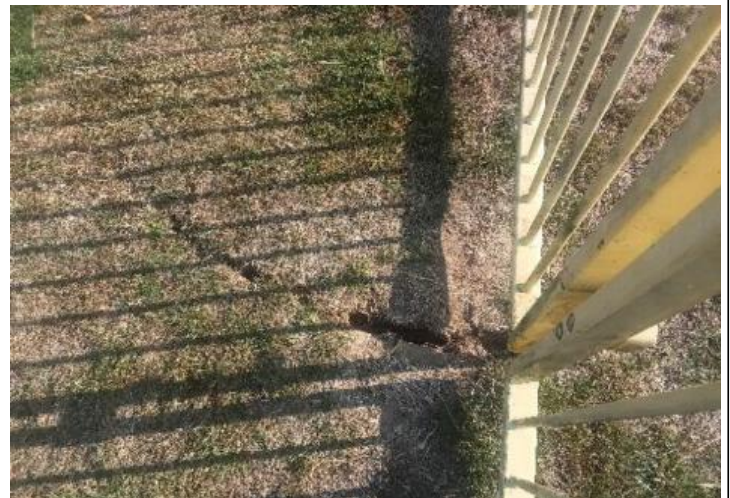


Finding: There is a shallow hole in the grass under the gate **Action:** Reinstate to provide a uniform surface

i 6 - Low Risk (Finding 1)

Item: Gates - Gate - Combination
Manufacturer: I.A.E. Fencing

Risk Level: L - Low Risk
Surface: Grass



Finding: The gate has no drop bolt sleeves fitted and the drop bolt has damaged the surface

Action: Provide drop bolt sleeves and reinstate the surrounding surface

i 6 - Low Risk (Finding 2)

Item: Gates - Gate - Combination
Manufacturer: I.A.E. Fencing

Risk Level: L - Low Risk
Surface: Grass



Finding: There is no padlock on the maintenance gate

Action: Provide a padlock to secure the gate

i 6 - Low Risk (Finding 1)

Item: Fences - Fence - Bow Top
Manufacturer: Not Identified

Risk Level: L - Low Risk
Surface: Grass



Finding: The adjacent foliage is overhanging

Action: Cut back and maintain

i 8 - Low Risk (Finding 1)

Item: Ancillary Items - Teenage Shelter
Manufacturer: Not Identified

Risk Level: L - Low Risk
Surface: Concrete



Finding: There are trip hazards at the edges of the surface **Action:** Remove trip hazard

i 6 - Low Risk (Finding 2)

Item: Ancillary Items - Teenage Shelter
Manufacturer: Not Identified

Risk Level: L - Low Risk
Surface: Concrete



Finding: The paintwork on this item has been damaged or worn exposing the metal underneath which is rusting / corroding

Action: Treat affected areas and repaint

i 6 - Low Risk (Finding 1)

Item: Swings - 1 Bay 2 Seat (Flat)
Manufacturer: Wicksteed Playgrounds

Risk Level: L - Low Risk
Surface: Grass Matrix Tiles



Finding: The seats are too close to each other as defined in BS EN 1176 Part 2; this is a low risk failure and no remedial action is required
Action: Monitor - No action given the risk assessment

i 5 - Very Low Risk (Finding 2)

Item: Swings - 1 Bay 2 Seat (Flat)
Manufacturer: Wicksteed Playgrounds

Risk Level: V - Very Low Risk
Surface: Grass Matrix Tiles



Finding: The chain openings are in excess of the 8.6mm as recommended by BS EN 1176 **Action:** Monitor - No action given the risk assessment

i 8 - Low Risk (Finding 3)

Item: Swings - 1 Bay 2 Seat (Flat)
Manufacturer: Wicksteed Playgrounds

Risk Level: L - Low Risk
Surface: Grass Matrix Tiles



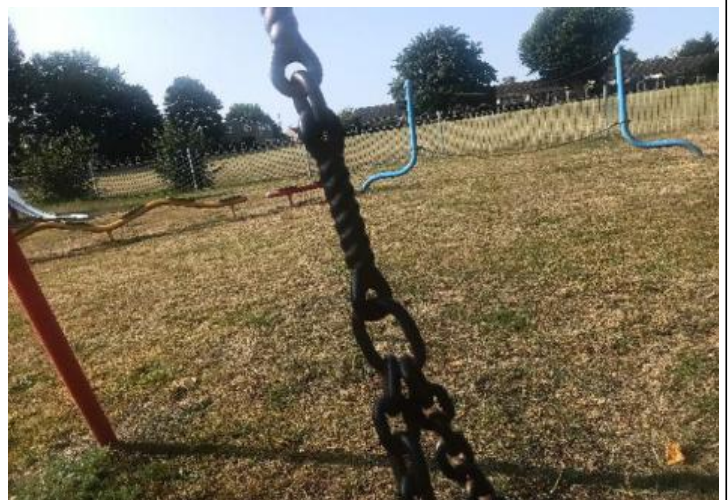
Finding: The chain links are worn excessively and require renewing

Action: Replace worn chains

i 6 - Low Risk (Finding 4)

Item: Swings - 1 Bay 2 Seat (Flat)
Manufacturer: Wicksteed Playgrounds

Risk Level: L - Low Risk
Surface: Grass Matrix Tiles



Finding: The connecting lugs are showing signs of wear

Action: Monitor for any further deterioration and repair as required

i 6 - Low Risk (Finding 5)

Item: Swings - 1 Bay 2 Seat (Flat)
Manufacturer: Wicksteed Playgrounds

Risk Level: L - Low Risk
Surface: Grass Matrix Tiles



Finding: There is some wear to the shackles.

Action: Monitor for any further deterioration and replace when 40% worn

i 6 - Low Risk (Finding 1)

Item: Rocking Equipment - See Saw
Manufacturer: Wicksteed Playgrounds

Risk Level: L - Low Risk
Surface: Grass Matrix Tiles



Finding: The surface has subsided in some areas creating trip point

Action: Reinststate surface

i 5 - Very Low Risk (Finding 1)

Item: Activity Equipment - Activity Trail
Manufacturer: Wicksteed Playgrounds

Risk Level: V - Very Low Risk
Surface: Grass



Finding: The connecting links are in excess of 8.6mm and less than 12mm and fail the requirements of BS EN 1176 Part 1; clause 4.2.13, Chains

Action: Monitor - No action given the risk assessment

i 6 - Low Risk (Finding 2)

Item: Activity Equipment - Activity Trail
Manufacturer: Wicksteed Playgrounds

Risk Level: L - Low Risk
Surface: Grass



Finding: The ropes/nets are worn/damaged in places

Action: Monitor for any further deterioration and repair or replace as required

i 5 - Very Low Risk (Finding 1)

Item: Activity Equipment - Multi Play (Junior)
Manufacturer: Wicksteed Playgrounds

Risk Level: V - Very Low Risk
Surface: Grass Matrix Tiles



Finding: The item fails to meet the requirements of BS EN 1176 Part 1 4.2.7.2 for head and neck entrapment in the rope

Action: Monitor - No action given the risk assessment

i 6 - Low Risk (Finding 2)

Item: Activity Equipment - Multi Play (Junior)
Manufacturer: Wicksteed Playgrounds

Risk Level: L - Low Risk
Surface: Grass Matrix Tiles



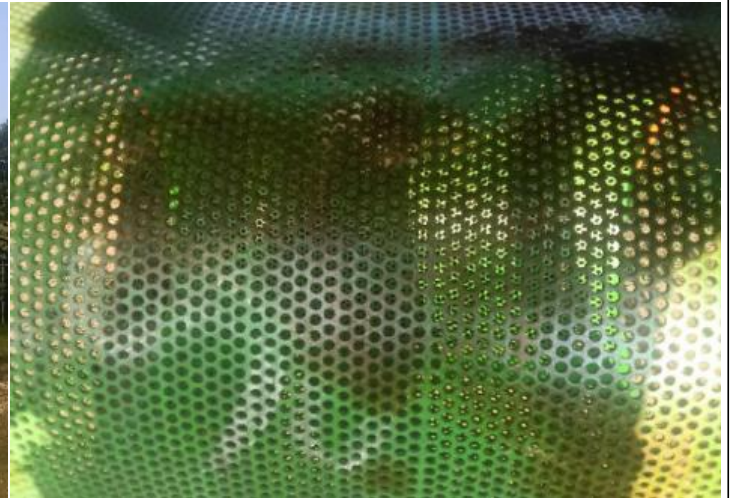
Finding: The ropes/nets are worn/damaged in places

Action: Monitor for any further deterioration and repair or replace as required

i 6 - Low Risk (Finding 3)

Item: Activity Equipment - Multi Play (Junior)
Manufacturer: Wicksteed Playgrounds

Risk Level: L - Low Risk
Surface: Grass Matrix Tiles



Finding: The paintwork on this item has been damaged or worn exposing the metal underneath which is rusting / corroding

Action: Treat affected areas and repaint

i 8 - Low Risk (Finding 4)

Item: Activity Equipment - Multi Play (Junior)
Manufacturer: Wicksteed Playgrounds

Risk Level: L - Low Risk
Surface: Grass Matrix Tiles



Finding: Cable ties are present and there are sharp projecting ends

Action: Remove

i 5 - Very Low Risk (Finding 1)

Item: Swings - 1 Bay 2 Seat (Cradle)
Manufacturer: Wicksteed Playgrounds

Risk Level: V - Very Low Risk
Surface: Grass Matrix Tiles

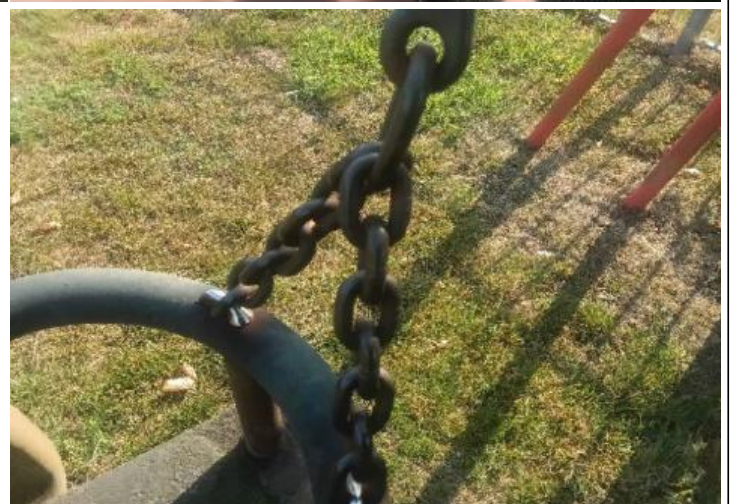


Finding: The chain openings are in excess of the 8.6mm as recommended by BS EN 1176 **Action:** Monitor - No action given the risk assessment

i 6 - Low Risk (Finding 2)

Item: Swings - 1 Bay 2 Seat (Cradle)
Manufacturer: Wicksteed Playgrounds

Risk Level: L - Low Risk
Surface: Grass Matrix Tiles



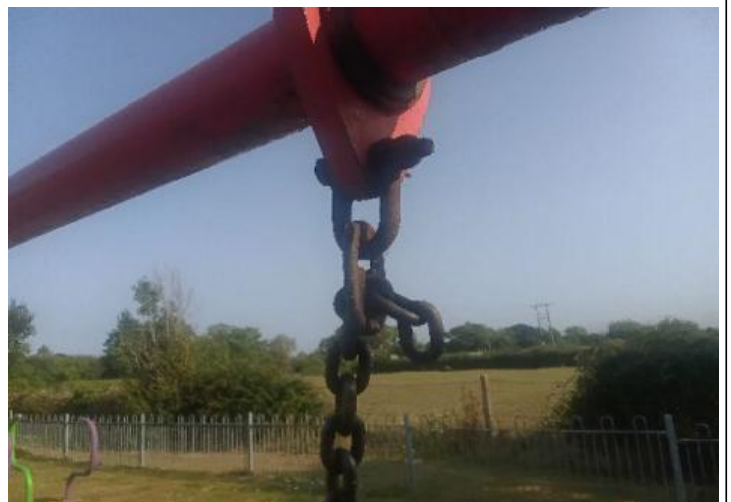
Finding: There is some notable evidence of chain wear

Action: Monitor for any further deterioration and replace when 40% worn

i 6 - Low Risk (Finding 3)

Item: Swings - 1 Bay 2 Seat (Cradle)
Manufacturer: Wicksteed Playgrounds

Risk Level: L - Low Risk
Surface: Grass Matrix Tiles



Finding: There is some wear to the shackles.

Action: Monitor for any further deterioration and replace when 40% worn

 12 - Moderate Risk (Finding 1)

Item: Multi Use Games Area - Basketball Post
Manufacturer: Adidas

Risk Level: M - Moderate Risk
Surface: Bitmac



Finding: The backboard graphics card is damaged

Action: Replace

i 8 - Low Risk (Finding 2)

Item: Multi Use Games Area - Basketball Post
Manufacturer: Adidas

Risk Level: L - Low Risk
Surface: Bitmac



Finding: There is a potential conflict between the users of the basketball post and the users of the fitness equipment

Action: Monitor and take appropriate action if required

i 6 - Low Risk (Finding 3)

Item: Multi Use Games Area - Basketball Post
Manufacturer: Adidas

Risk Level: L - Low Risk
Surface: Bitmac



Finding: There is some evidence of fire damage to the item **Action:** Monitor for any further deterioration and repair as required

i 4 - Very Low Risk (Finding 1)

Item: Ancillary Items - Sign
Manufacturer: Hags

Risk Level: V - Very Low Risk
Surface: Bitmac



Finding: There is some graffiti present

Action: Remove the graffiti

i 8 - Low Risk (Finding 1)

Item: Outdoor Fitness Equipment - Double Fitness Station
Manufacturer: Hags

Risk Level: L - Low Risk
Surface: Bitmac



Finding: There is offensive graffiti present

Action: Remove as soon as practicable

i 6 - Low Risk (Finding 1)

Item: Wheeled Sports - Flat Bank
Manufacturer: Not Identified

Risk Level: L - Low Risk
Surface: Bitmac



Finding: The item has insufficient safety zone allowed as required by BS EN 14974 – 6.4. This should equal at least 2.0 metres on this item

Action: Monitor - No action given the risk assessment

i 8 - Low Risk (Finding 2)

Item: Wheeled Sports - Flat Bank
Manufacturer: Not Identified

Risk Level: L - Low Risk
Surface: Bitmac



Finding: The height of the barrier is less than 1200mm in contravention of BS EN 14974 - 6.2.6. This height must be achieved all around the platform and at a maximum distance of 300mm from the front of the platform.

Action: Monitor - no reasonably practicable action given the risk assessment

i 8 - Low Risk (Finding 1)

Item: Wheeled Sports - Grind Box
Manufacturer: Not Identified

Risk Level: L - Low Risk
Surface: Bitmac



Finding: The item has insufficient safety zone allowed as required by BS EN 14974 – 6.4. This should equal at least 2.0 metres on this item

Action: Monitor - No action given the risk assessment

i 8 - Low Risk (Finding 1)

Item: Wheeled Sports - Fun Box
Manufacturer: Not Identified

Risk Level: L - Low Risk
Surface: Bitmac



Finding: The item has insufficient safety zone allowed as required by BS EN 14974 – 6.4. This should equal at least 2.0 metres on this item

Action: Monitor - No action given the risk assessment

i 8 - Low Risk (Finding 2)

Item: Wheeled Sports - Fun Box
Manufacturer: Not Identified

Risk Level: L - Low Risk
Surface: Bitmac



Finding: The surrounding surface protrudes more than 5mm above the kicker plate level, BS EN 14974 - 6.1.4 recommends a maximum of 5mm
Action: Adjust height to ensure a maximum of 5mm change in level

i 8 - Low Risk (Finding 1)

Item: Wheeled Sports - Grind Rail
Manufacturer: Not Identified

Risk Level: L - Low Risk
Surface: Bitmac



Finding: The item has been damaged

Action: Monitor for any further deterioration and replace as required

i 8 - Low Risk (Finding 1)

Item: Wheeled Sports - Quarter Pipe
Manufacturer: Not Identified

Risk Level: L - Low Risk
Surface: Bitmac



Finding: The height of the barrier is less than 1200mm in contravention of BS EN 14974 - 6.2.6. This height must be achieved all around the platform and at a maximum distance of 300mm from the front of the platform.

Action: Monitor - no reasonably practicable action given the risk assessment

i 8 - Low Risk (Finding 2)

Item: Wheeled Sports - Quarter Pipe
Manufacturer: Not Identified

Risk Level: L - Low Risk
Surface: Bitmac



Finding: The surrounding surface protrudes more than 5mm above the kicker plate level, BS EN 14974 - 6.1.4 recommends a maximum of 5mm
Action: Adjust height to ensure a maximum of 5mm change in level

i 0 - Risk Assessment not Undertaken (Finding 1)

Item: Multi Use Games Area - Football Goal
Manufacturer: Not Identified

Risk Level: N - Risk Assessment not Undertaken
Surface: Grass



Finding: NB: We have undertaken a maintenance inspection only of the football goal(s); full load testing falls outside the scope of our inspection.

Action: Implement load testing as required

i 6 - Low Risk (Finding 2)

Item: Multi Use Games Area - Football Goal
Manufacturer: Not Identified

Risk Level: L - Low Risk
Surface: Grass



Finding: The paintwork on this item has been damaged or worn exposing the metal underneath which is rusting / corroding

Action: Treat affected areas and repaint

i 6 - Low Risk (Finding 3)

Item: Multi Use Games Area - Football Goal
Manufacturer: Not Identified

Risk Level: L - Low Risk
Surface: Grass



Finding: The surface has eroded in some areas and may be slippery in wet conditions
Action: Reinstate the surface

i 6 - Low Risk (Finding 4)

Item: Multi Use Games Area - Football Goal
Manufacturer: Not Identified

Risk Level: L - Low Risk
Surface: Grass



Finding: There is algae or moss on the surface of the equipment

Action: Clean and treat appropriately